

Problem 12.48

x	y	x ²	xy
2007	11.9	4028049	23883.3
2008	17.9	4032064	35943.2
2009	22	4036081	44198
2010	21.8	4040100	43818
2011	26	4044121	52286

10045 99.6 20180415 200128.5

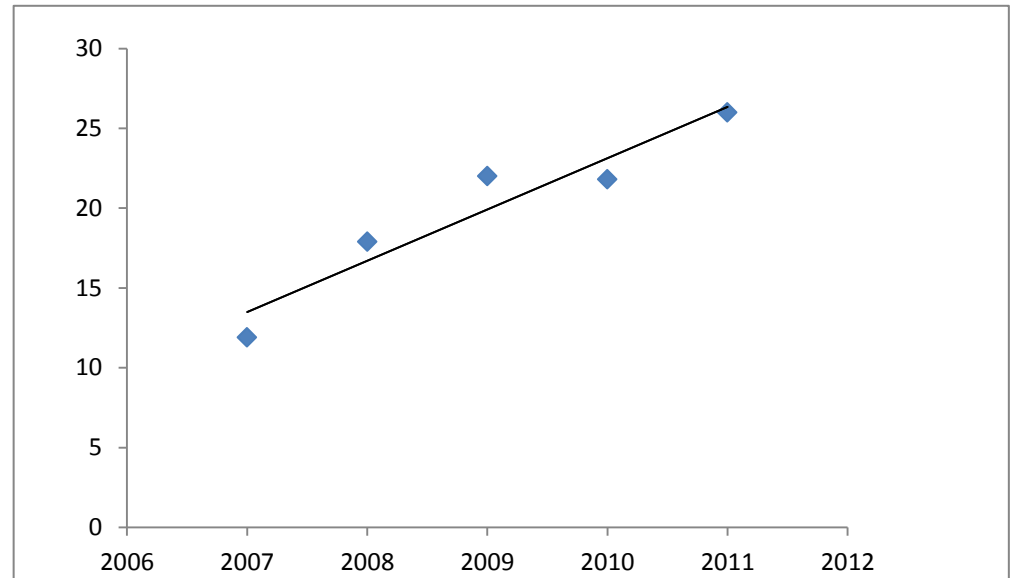
2013 32.73

b1 32.1/10 = 3.21

b0 99.6/5-3.21(10045/5)= -6428.97

$y = 3.21x - 6429$

$y = 3.21(2013) - 6429 = 32.73$



Problem 12.50

	x	y	x ²	xy
2008 Q1	1	11.93	1	11.93
Q2	2	12.46	4	24.92
Q3	3	13.28	9	39.84
Q4	4	15.08	16	60.32
2009 Q1	5	16.08	25	80.4
Q2	6	16.82	36	100.92
Q3	7	17.6	49	123.2
Q4	8	18.66	64	149.28
2010 Q1	9	19.73	81	177.57
Q2	10	21.11	100	211.1
Q3	11	22.21	121	244.31
Q4	12	22.94	144	275.28
	78	207.9	650	1499.07

b1 1.033
 b0 10.61 Forcast 2012 Q3 30.24

$$y = 1.033x + 10.61$$

$$y = 1.033(19) + 10.61 = 30.237$$

